

Castle and Hightae Lochs



Wildlife Report 2013

Castle and Hightae Lochs L N R Wildlife 2013

The situation regarding the L.N.R. agreement has remained unresolved in 2013 but the community buyout of Castle Loch should make resolution a great deal easier.

After two fairly hard winters spring arrived late in 2013. Overall the weather statistics for the year were close to the average but individual months created a very different impression. March was bitterly cold at times with snow falls on twenty days and the mean temperature hovering around 2C. There were only five days in the month when the minimum temperature did not drop below freezing. This colder than average weather continued into April and rainfall was fairly high. Although there was more sunshine during the summer June was the only month when rainfall was lower than 100mm. October and December were both extremely wet with flooding in lower lying areas.

The Pink-footed Goose roost (international importance) and Greylag Goose roost (national importance) have reduced drastically although feeding grounds around the area remain in use.

This report is based on the WeBS counts conducted each month throughout the year by Andy Riches (AR) and additional records from other visits and observers. Many thanks to the following: Ross Gemmell (RG), Brian Henderson (BH), Joyce Henderson (JH), Helen Kelly (HK), Richard and Barbara Mearns (R&BM), Violet Sinclair (VS), Anna White (AW). Some old records have initials for the recorders: Iain Anderson (IA), Derek Bearhop (DB), Colin Bushell (CB), Stuart Graham (SG), Michael Granger (MG), John Miles (JM), Tristram Reid (TR), Paul Seddon (PSed), Freda Seddon (FSe), Paul Shimmings (PSh), Angus Sloan (AS), Dawn Wright (DW).

In addition to providing his records, Richard Mearns has provided historical information, support and advice without which this report would not exist.

The descriptions of status refer to status on the reserve only.

Species recorded in 2013 are listed in bold type.

In spite of the many regular contributors listed above new records are always welcome and should be sent to Andy Riches sloch69@aol.com as soon as possible after the end of the year. Thank you.

This report and the information it contains is copyright and should not be reproduced or used without prior permission.

MAMMALS.



Weasel

SOPRANO PIPISTRELLE BAT: *Present throughout the year and probably breeds.*

COMMON PIPISTRELLE BAT: *Present throughout the year and probably breeds.*

DAUBENTON'S BAT: *Present throughout the year and probably breeds.*

NOCTULE BAT: *Reported occasionally from Hightae Loch. Numbers reported are declining since 2002 when at least 22 were noted on 28th May. This may simply be due to lack of observers or possibly results from the clearfell in 2009. Last record 18th July 2006 (R&BM).*

PIGMY SHREW: *Present throughout the year and breeds.*

COMMON SHREW: *Present throughout the year and breeds.*

WATER SHREW: *Present throughout the year and breeds.*

WOOD MOUSE: *Present throughout the year and breeds.*

FIELD VOLE: *Present throughout the year and breeds.*

BANK VOLE: *Present in the Castle Woodland and breeds.*

WATER VOLE: *Found for the first time last year in the Castle Woodland and Valison Burn area. Remains present and breeds.*

BROWN RAT: *Present throughout the year and breeds.*

RED SQUIRREL: *Present in Castle and Dalton Road Woodlands throughout the year and breeds.*

WEASEL: *Present throughout the year and breeds.*

STOAT: *Present throughout the year and breeds.*

AMERICAN MINK: *Present throughout the year and breeds.*

OTTER: *Present throughout the year and breeds. Many sightings at both lochs by a number of observers. The holt at Castle Loch is in regular use and there was successful breeding again this year. The holt at Hightae Loch has remained unused since the clearfell in 2009.*

BADGER: *Often present in Hightae Woodland prior to the clearfell. No signs since the clearfell and the complete destruction of one sett and the partial destruction of the other. Occasionally visits Castle Loch.*

RED FOX: *Often present in Hightae Woodland prior to the clearfell and adjacent to the Castle Loch. Seen frequently in the Sanctuary Zone.*

ROE DEER: *Often present in Hightae Woodland prior to the clearfell and adjacent to the Castle Loch.*

DRAGONFLIES.



Male Common Blue Damselfly

LARGE RED DAMSELFLY: *Present and breeds. Stronghold on the Valison Burn. Maximum number recorded: 28 on wing; 11 in cop; 6 ovipositing (AR).*

BLUE-TAILED DAMSELFLY: *Present and breeds. Stronghold on the Valison Burn. Maximum numbers: 110 on wing; 25 in cop; 19 ovipositing (AR).*

COMMON BLUE DAMSELFLY: *Present and breeds. Stronghold on the Valison Burn. Maximum numbers: 150 on wing; 34 in cop; 21 ovipositing (AR).*

AZURE DAMSELFLY: *Present and breeds. Stronghold on the Valison Burn. Maximum numbers: 24 on wing; 7 in cop; 6 ovipositing (AR).*

VARIABLE DAMSELFLY: *Present and breeds. Stronghold on the Valison Burn. Maximum numbers: 40 on wing; 12 in cop; 6 ovipositing (AR).*

EMERALD DAMSELFLY: *Present and probably breeds. No records this year.*

COMMON DARTER: *Present and breeds. Maximum numbers: 4 on wing; 2 in cop; 1 ovipositing. All at Hightae Loch (AR).*

FOUR-SPOTTED CHASER: *Present and may breed. Maximum numbers: 2 on wing at Castle Loch and 2 on wing at Hightae Loch (both AR).*

COMMON HAWKER: *Present and probably breeds. Maximum numbers: 3 on wing at Castle Loch and 4 on wing at Hightae Loch (both AR).*

BLACK DARTER: *Visited and was seen apparently ovipositing in Valison Burn area in 2010. But the habitat preferences of this insect would suggest that this behaviour was an aberration. A single record of a male in 2011 (AR). No records in 2012 or 2013.*

GOLDEN-RINGED DRAGONFLY: *Occasional visitor. Single male recorded at Castle Loch on two occasions in 2012 and a single occasion in 2013 (AR).*

MIGRANT HAWKER: *Present since 2004. No records this year.*

SOUTHERN HAWKER: *Single insect recorded at Castle Loch on 10th October (BH). A first for the reserve.*

HOVERFLIES.



Male Hoverfly: Sericomyia lappona

ARCTOPHILA SUPERBIENS: *Present at both lochs and breeds.*

BACCHA ELONGATA: *Present at both loch and may breed.*

CHRYSOTOXUM BICINCTUM: *Present at both lochs and may breed.*

DASYSYRPHUS VENUSTUS: *Last recorded 16th May 1980 at Castle Loch.*

EPISTROPHE GROSSULARIAE: *Last recorded on 14th July 1979 at Castle Loch.*

EPISYRPHUS BALTEATUS: *Present at both lochs and breeds.*

ERISTALIS ARBUSTORUM: *Present at both lochs.*

ERISTALIS HORTICOLA: *Present at both lochs.*

ERISTALIS INTERRUPTUS: *Present at both lochs.*

ERISTALIS PERTINAX: *Present at both lochs and breeds.*

ERISTALIS TENAX: *Present at both lochs and breeds.*

EUPEODES LUNIGER: *Present at both lochs and breeds at Hightae Loch.*

HELOPHILUS PENDULUS: *Present at both lochs and breeds.*

HELOPHILUS TRIVITTATUS: *Last record on 14th June 1980 at Castle Loch.*

LEUCOZONA LATERNARIA: *Last record on 4th August 1976 at Castle Loch.*

LUCOZONA LUCORUM: *Present at both lochs and breeds at Hightae Loch.*

MELANOSTOMA MELLINUM: *Last record on 16th May 1980 at Castle Loch.*

MELANOSTOMA SCALARE: *Present at Castle Loch and may breed there.*

MERODON EQUESTRIS: *Present at both lochs and breeds at Hightae Loch.*

MYATHROPA FLOREA: *Present at both lochs and breeds.*

NEOASCIA PODAGRICA: *Last record on 16th May 1980 at Castle Loch.*

NEOASCIA TENUR: *Last record on 16th May 1980 at Castle Loch.*

PLATYCHEIRUS CLYPEATUS: *Last record on 16th May 1980 at Castle Loch.*

PLATYCHEIRUS FULVIVENTRIS: *Last record 14th July 1979 at Castle Loch.*

PLATYCHEIRUS PERPALIDUS: *Last record on 16th May 1980 at Castle Loch.*

PORTEVINIA MACULATA: *Present at both lochs and breeds.*

RHINGIA CAMPESTRIS: *Present at both lochs and breeds.*

SCAEVA PYRASTRI: *Present at both lochs and breeds.*

SERICOMYIA LAPPONA: *Present at both lochs and breeds.*

SERICOMYIA SILENTIS: *Present at both lochs and breeds at Hightae Loch.*

SYRITTA PIPIENS: *Present at both lochs and breeds at Castle Loch.*

SYRPHUS RIBESII: *Present at both lochs and breeds at Castle Loch.*

SYRPHUS TORVUS: *Present at both lochs and probably breeds.*

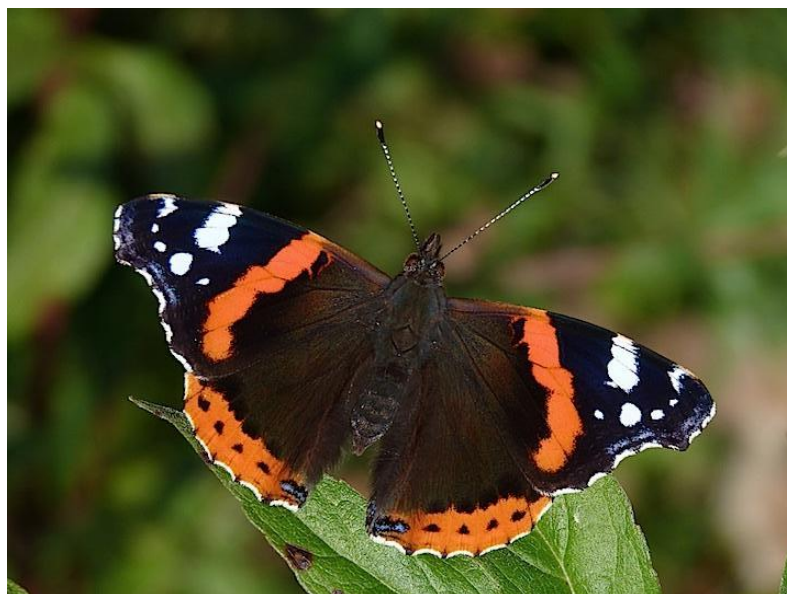
SYRPHUS VITRIPENNIS: *Present at both lochs and breeds at Hightae Loch.*

VOLUCELLA BOMBYLANS: *Present at both lochs and breeds at Castle Loch.*

VOLUCELLA PELLUCENS: *Present at both lochs and probably breeds.*

XYLOTA SEGNIS: *Present at both lochs and breeds.*

BUTTERFLIES.



Red Admiral

SMALL WHITE: *Maximum numbers 22 at Castle Loch (AR).*

LARGE WHITE: *Maximum numbers 6 at Castle Loch (AR).*

GREEN-VEINED WHITE: *Maximum numbers 51 at Castle Loch (AR).*

ORANGE TIP: *Maximum numbers 5 at Castle Loch (AR).*

PEACOCK: *Maximum numbers 8 at Castle Loch (AR).*

SMALL TORTOISESHELL: *Maximum numbers 6 at Castle Loch (AR).*

RED ADMIRAL: *Maximum number 7 at Castle Loch (AR).*

RINGLET: *Maximum number 18 at Castle Loch (AR).*

SMALL COPPER: *No records this year. One was seen on 2nd June 2010 (AR) which was a first record for the reserve.*

SMALL HEATH: *Maximum number 1 at Hightae Loch. Only the third record for the reserve.*

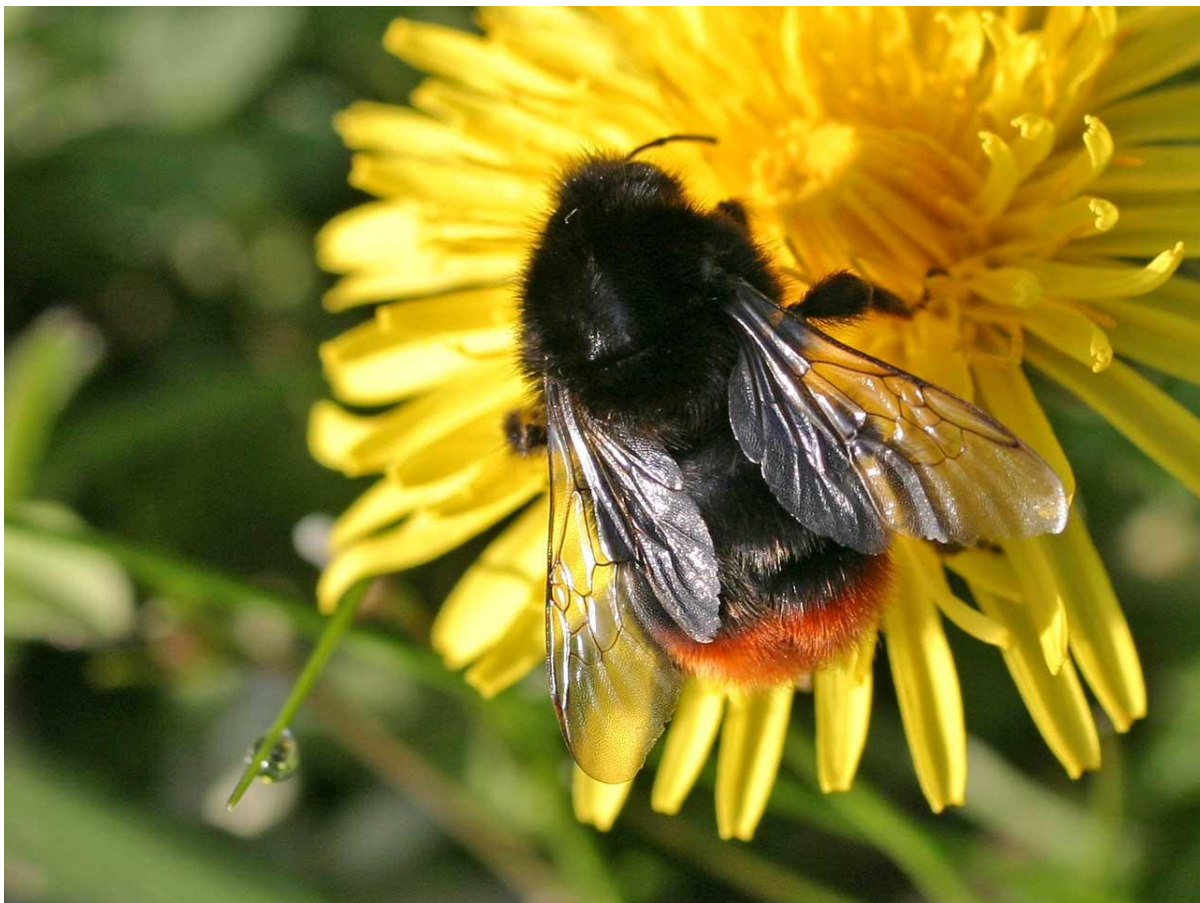
MEADOW BROWN: *Maximum number 1 at Castle Loch in 2012 which was only the second record for the reserve. No records in 2013.*

COMMON BLUE: *One was seen on 1st July 2010 (AR) which was a first record for the reserve. No records since.*

PAINTED LADY: *Maximum number 4 at Castle Loch (AR).*

COMMA: *One seen at Hightae Loch on 17th March 2009 (AW). A first record for the reserve and a rarity in the region. No records since then.*

BUMBLE BEES.



Queen Bombus lapidarius

BOMBUS PASCUORUM: *Maximum number: 10 at Castle Loch (AR).*

BOMBUS LAPIDARIUS: *Maximum number: 9 at Castle Loch (AR).*

BOMBUS PRATORUM: *Maximum number: 4 at Castle Loch (AR).*

BOMBUS TERESTRIS: *Maximum number: 34 at Castle Loch (AR).*

BOMBUS LUCORUM: *Maximum number: 8 at Castle Loch (AR).*

BOMBUS HORTORUM: *Maximum number: 4 at Castle Loch (AR).*

BIRDS.



Bittern, Castle Loch, Brian Henderson

RED-THROATED DIVER: *Rare winter visitor. Last recorded 12th November 1972.*

BLACK-THROATED DIVER: *Rare winter visitor. Last recorded 21st March 1984.*

GREAT NORTHERN DIVER: *Very Rare. No previous records. First record seen at Castle Loch on 17th November 2008 (CB). Seen thereafter by a number of observers until the end of the month.*

LITTLE GREBE: *Recorded most years but no evidence of breeding at Castle Loch. Maximum count: 3 at Castle Wood area, Castle Loch on 3rd February (BH). Adult with two young at Hightae Loch on 29th July (AR).*

GREAT CRESTED GREBE: *Regular breeder. First bred at Lochmaben in 1891. Maximum count: 14 adults on 28th June (BH). Evidence of successful breeding from two pairs (BH, AR). Hopefully this is a sign that the programme of mink trapping now in place is bearing fruit and numbers will start to rise to their former levels.*

RED-NECKED GREBE: *Rare winter visitor. Last recorded 6th April 1992.*

SLAVONIAN GREBE: *Rare autumn/winter or early spring visitor. Last previous records one in October 2009 (BH) and two in November 2010.*

BLACK-NECKED GREBE: *Rare winter and summer visitor. Last recorded 6th October 1996.*

PIED-BILLED GREBE: *Rare American vagrant. One record 24-25th April 1981.*

GREAT CORMORANT: *Common resident. Last breeding records 1898-1903 (Sir Hugh Gladstone). Maximum count: 75 on 25th March (BH).*

EURASIAN BITTERN: *Rare vagrant. Unconfirmed report of four on 29th January 2006 (Birdline Scotland). Possible sighting on 6th December 2006 when a bird took off from shallow water amongst willows but was immediately lost to view (RM). Report (via TR) of a Northumbrian birder having “good views” of 2 birds in the reeds by the yacht club on 18th January 2008. Further possible sighting on 23rd June 2008 with a bird taking off from the reeds on the west side of Castle Loch but again being immediately lost to view (AR & DW). One seen on ice near the inflow of the Innerfield Burn on 24th December 2010 (AR) and again on 28th (DB). Single bird seen on 24th December 2011(BH) and again on 27th and 28th December 2011 (BH, JH). Two birds present on 23rd December 2012 (BH). Single bird seen at Castle Loch on numerous occasions between 8th January and 5th March (BH). A single bird present on 6th and 26th December (BH).*

LITTLE EGRET: *Rare vagrant. Last record was a single bird seen on 6th March 2011 near mouth of Valison Burn (BH).*

GREY HERON: *Regular Visitor. Maximum count 7 on 21st February (BH).*

PURPLE HERON: *Rare vagrant. One record only 27th May 1975 at Hightae Loch.*

MUTE SWAN: *Regular breeder with two pairs fledging young again this year. The usual rise in numbers during the moulting period saw a maximum of 126 birds on 26th August (AR).*

BEWICK'S SWAN: *Rare winter visitor. Last recorded 20th January 1995. Three birds at Castle Loch on 15th December 2011 (BH) rising to five birds on 22nd December 2011(BH). Five birds still present on 5th January 2012 (AR). No records in 2013.*

WHOOPER SWAN: *Irregular winter visitor. Numbers down this year. Maximum count: 9 on 10th October (BH).*

BLACK SWAN: *Rare vagrant. Last previous record of a single bird that arrived in early July 2010 and was in the area until mid-September of that year. Two birds present in sanctuary zone early on the morning of 5th March (BH).*

BEAN GOOSE: *Rare winter visitor. Last recorded 23-25th February 1983.*

PINK-FOOTED GOOSE: *Formerly regular winter visitor in internationally important numbers. A sad reflection on the state of the reserve is the almost complete collapse of the goose roost. The surrounding fields continue to be used for feeding but it is now extremely unusual to see any geese roosting on the loch at night. Once again considerable disturbance from overnighing fishermen, on occasion using motor boats, was been observed during the national roost counts. No night time counts recorded any birds roosting.*

WHITE-FRONTED GOOSE: *Rare winter visitor. Last recorded 16th February 1992.*

GREYLAG GOOSE: *Two pairs resident and breed. Once a regular winter visitor in considerable numbers. Now a roost reaching three figures is noteworthy. Two resident pairs seen regularly throughout the year by a number of observers. A single brood of 4 young seen with parents on 26th August and observed regularly thereafter (AR). 101 birds were present on 9th August, possibly connected with the usual post-breeding gathering at Caerlaverock. Numbers, probably of Icelandic birds, rose to a maximum of 229 on 14th September (BH) and then declined steadily with only single birds present after 10th of October. Counts of Icelandic birds during the annual roost census remain exceptionally low, only reaching double figures on one occasion. The Icelandic birds continue to use their traditional feeding areas around Lochmaben.*

SNOW GOOSE: *Rare winter vagrant and uncommon escapee from wildfowl collections. Last recorded 14th October 1990.*

BAR-HEADED GOOSE: *Asiatic introduction. Now feral. One record of 11 birds on two dates in August 2001 (PSh).*

CANADA GOOSE: *North American introduction, now a common UK resident. Occurs throughout the year and is an irregular breeder on the reserve. At least two pairs bred this year with broods of 6 and 5 young seen 26th August (AR). Maximum count: 162 on 10th October (AR).*

HYBRID GEESE (GREYLAG x CANADA GOOSE): *Single hybrid seen frequently throughout 2008. Last seen on 13th February 2009 (BH).*

BRENT GOOSE: *Rare winter visitor. Last recorded 12th January 2004.*

BARNACLE GOOSE: *Occasional winter visitor. Single bird overflying on 23rd January (BH).*

COMMON SHELDUCK: *Irregular breeder, usually one or two pairs only. Last recorded breeding 2007. No signs of successful breeding on the reserve again this year. Maximum count: 6 during WeBS counts in June and November (AR).*

RUDDY SHELDUCK: *Accidental from Asia or north-west Africa, or uncommon escapee from a wildfowl collection. One record 27th April 2004 (AR).*

MANDARIN DUCK: *Escape from wildfowl collections. Not previously recorded on reserve. Single present on 10th October near Lochside plantation (BH).*

EGYPTIAN GOOSE: *Introduced now feral. Single bird at castle Loch on 1st November 2011 (BH) and seen thereafter by a number of observers.*

EURASIAN WIGEON: *Regular winter visitor, scarce in summer. Maximum count: 608 on 4th January (BH). Maximum count during the second winter period was 429 on 28th December (BH).*

AMERICAN WIGEON: *Accidental from North America or escapee from wildfowl collection. There was an unconfirmed sighting in 2003 and a single male was present between early October and Mid December 2009 (BH). A single bird was present from the 22nd January until 2nd February 2010 (BH). Single male at Castle Loch 22nd November 2011 (BH). This bird remained in the area alternating between Castle and Kirk Lochs until the end of the year being seen by numerous observers. A single male was seen in a flock of Eurasian Wigeon in the Castle Wood area on 5th April 2012 (BH). A further single male was seen in Vendace Bay on the 2nd and 5th of November 2012 (both BH). No records this year.*

GADWALL: *Occasional winter visitor or during spring passage. Birds regularly present during the first three months of the year with a maximum count of 8 on 15th February (BH). Numbers were lower during the second winter period, not exceeding 4. Two birds were present on 1st June (BH).*

COMMON TEAL: *Regular winter visitor. Maximum count: 168 on 10th October (AR).*

GARGANEY: *Rare summer visitor. Last previous records 15th September 1991, 3rd June 2003 5th May 2006 and a single drake seen by numerous observers between 28th February and 30th March 2008. This bird was noted to have a yellow ring on the right leg (R&BM). This and the time of its arrival (rather early for a migrant) suggest that it might not have been a wild bird. A further sighting of probably the same bird on 16th April (JB & G Garner).*

MALLARD: *Regular throughout the year and breeds. Numbers peaking at 272 during the moult gathering on 23rd August (BH).*

NORTHERN PINTAIL: *Irregular winter visitor. Maximum count: 2 on 26th January (BH). Single bird reported during second winter period. It was present between 16th and 29th December (BH).*

NORTHERN SHOVELER: *Irregular visitor, winter and spring. Maximum count: 11 on 5th October (BH).*

RED-CRESTED POCHARD: *Rare vagrant and uncommon escapee from wildfowl collections. Last recorded 9th September 1995.*

COMMON POCHARD: *Irregular winter visitor. Higher numbers than usual during the first winter period with a maximum count of 8 on 10th and 12th March (BH). At least 4 birds were regularly present between 8th February and 15th March. During the second winter period numbers were not as high with a maximum of 3 birds on 18th November (BH).*

TUFTED DUCK: *Present throughout the year. Maximum count: 190 on 11th February (BH). Maximum count during second winter period 185 on 29th December (BH). Four young seen during WeBS count on 29th August (AR).*

GREATER SCAUP: *Very occasional winter visitor. Last previous record single male at Castle Loch. First seen on 6th March 2010 (BH) and thereafter by various observers until the end of the month. Single male at Castle Loch on 20th November 2010 (BH). A single female present between 15th January and 10th April (BH). A maximum of six birds, 5 females and 1 male were seen off Henderland Island on 2nd September (BH). At the start of the second winter period a single male was present from 12th to 26th October (BH).*

LESSER SCAUP: *Rare transatlantic vagrant. Last recorded 26th January 2004 (IA). Bird with superficial appearance of Lesser Scaup seen by a number of observers in 2008. This appears to have been a hybrid although its exact nature has not been determined.*

LONG-TAILED DUCK: *Rare winter visitor. Last previous records 24th December 1994, 6th November-15th December 2002, 23rd January 2003, 8th and 12th December 2005 and 11th January-12th April 2006. Two birds present during the latter half of February 2008 and then again from 17th November until the end of the year. In 2009 a single male was present from 14th to 28th January 2009 and a female from 15th November until 16th December. One male bird was first seen on 1st November 2010 (BH) and remained until 5th being seen by a number of observers.*

COMMON SCOTER: *Scarce visitor. Last previous record at Castle Loch on 13th March 2006 (RM). Single male present in Vendace Bay on 9th and 12th August (BH).*

VELVET SCOTER: *Rare visitor. One record 18th October 2000.*

COMMON GOLDENEYE: *Regular winter visitor, sometimes remaining well into summer. Maximum count: 83 on 18th of February (BH). All birds were gone by the end of March. The return started relatively late with a single female on 12th October, numbers rising slowly thereafter to 33 on 21st November and peaking at 61 on 22nd December (all BH).*

SMEW: *Seen most winters in small numbers. Last previous records: 3 on 14th January 2009 (BH) rising to 4 on 5th February. Last sighting: 1 on 28th February. Single redhead at Castle Loch on 14th November 2010 (AR). Single female present at Castle Loch on 20th February 2011 (BH). Single female present at Dalton Road piers on 6th February 2012 (BH). Single female present in Innerfield Burn area 25th November (BH).*

RED-BREASTED MERGANSER: *Was once a fairly regular visitor in winter. Has declined substantially in recent years but probably slightly under-recorded. Record of a single male at Henderland Island, Castle Loch on 21st April 2012 (BH). No records in 2013.*

GOOSANDER: *Regular winter visitor. Breeds locally. Once present in sub-nationally important numbers. Numbers were low during the first winter period with a maximum of 77 birds on 27th January (BH). Numbers picked up substantially during the second winter period with the flock consistently over 120 during WeBS counts from September to the end of the year. Maximum count of 132 on 10th November (AR).*

RUDDY DUCK: *North American introduction. Occasional visitor. Last record is a pair at Castle Loch on 16th January 2006 (RM).*

RED KITE: *Rare vagrant. One record Hightae Loch early 1990s (FSed).*

MARSH HARRIER: *Scarce summer visitor. Last previous records a single on 20th May 1984 at Hightae Loch and a single at Castle Loch on 7th September 2010 (BH). Single bird quartering over the Vendace Bay reed beds on 13th August 2013 (BH).*

HEN HARRIER: *Scarce visitor. Last recorded 2nd March 1990.*

NORTHERN GOSHAWK: *Scarce local breeder. Last previous record one flew over Castle Loch from the west, circled and then returned west on 17th March 2008 (AW).*

EURASIAN SPARROWHAWK: *Resident, probably breeds in woodland on reserve. Seen regularly at both lochs by a variety of observers.*

COMMON BUZZARD: *Resident, has bred in woodland on reserve. Seen regularly at both lochs by a variety of observers. Two pairs continue to use the area this year. One based in woodland to the East and the other in Castle Wood (AR). Maximum count: 4 on 10th October (AR).*

ROUGH-LEGGED BUZZARD: *Rare winter visitor. Last recorded at Hightae Loch February 2004 (FSe).*

OSPREY: *Occasional on passage, spring and autumn. A single bird was seen in the Lochside Plantation area on the 8th and 9th of April and there was a further sighting of a single bird in the same area on the 9th and 10th of May (all BH).*

KESTREL: *Resident breeder. Seen regularly over sanctuary zone by a variety of observers.*

MERLIN: *Scarce visitor. Last recorded 8th April 2005 (but probably under-recorded).*

HOBBY: *Rare summer visitor. One record 17-18th July 1982.*

PEREGRINE: *Occasional winter visitor. Single flying over at Castle Loch on 24th February (BH). Last previous records were a single at Castle Loch on 6th September 2010 and a juvenile seen at Hightae Loch on 28th September 2011 (both BH).*

RED-LEGGED PARTRIDGE: *Sometimes reared and released in area. Single bird seen on entrance road to castle on 28th September 2012 (BH). No records in 2013.*

GREY PARTRIDGE: *Declining farmland resident. Last recorded 1991.*

COMMON PHEASANT: *Resident breeder. Bred in Castle Wood.*

WATER RAIL: *Regular winter visitor but breeding has only rarely been confirmed. There were ten records this year, a considerable advance on 2012 in which there were only three. All the records were of single birds, with three occurring in January and the remainder between 22nd November and 21st December (all BH).*

SPOTTED CRAKE: *Very rare breeder in UK. Only record 26th August 2001 at Hightae Loch (PSh).*

CORN CRAKE: *Former resident breeder? Last recorded 1st and 2nd August 1980 (PSh and Dugald Black).*

MOORHEN: *Resident breeder, in small numbers. Maximum count: 11 on 10th November (AR). Adult with 4 juveniles seen on 3rd July (BH).*

EURASIAN COOT: *Winter visitor. Small numbers breed. Maximum count: 85 on 4th January (BH). Adult and 4 young seen on 26th August (AR).*

AMERICAN COOT: *Rare American vagrant. One record 10-17th February 2004 (AW).*

OYSTERCATCHER: *Irregular visitor in spring and autumn, sometimes breeds in or near reserve. No breeding in reserve noted this year.*

LITTLE RINGED PLOVER: *Scarce summer visitor to Scotland. One record 18th May 1996 (RM).*

RINGED PLOVER: *Occasional passage migrant. Last recorded March and July 2005.*

GOLDEN PLOVER: *Occasional passage migrant. None on reserve since 8th September 1995. Large flocks still regular at Greenhill, near River Annan, where 650 on 5th April 2006 (PSh).*

NORTHERN LAPWING: *Irregular visitor in spring and autumn, sometimes breeding on or near the reserve. Serious decline in numbers in recent years. 82 overflying on 10th October (AR).*

CURLEW SANDPIPER: *Rare passage migrant. One record 8th September 1999 at Hightae Loch (RM).*

DUNLIN: *Scarce passage migrant. Seen very occasionally, last previous records 10th May 1999, 29th April and 20th July 2003 with eleven birds seen on the latter date. Single bird at Henderland Island on 28th July (BH).*

RUFF: *Scarce passage migrant. Very occasional, last previous record several autumn dates in 1995. Three present at Castle Loch on the 7th September 2010 and one on the 9th September 2010 (both BH).*

JACK SNIPE: *Scarce winter visitor. Last recorded 9th March 1986.*

COMMON SNIPE: *Common passage migrant and local breeder.*

WOODCOCK: *Occasional breeder and winter visitor. Last recorded roding 27th March 1990. Single records at both lochs in March 2004. Single at Castle Loch on 23rd and 24th December 2010 (BH). Two in Castle Woods on 23rd January (BH).*

BLACK-TAILED GODWIT: *Scarce passage migrant. Last previous record 29th August to 1st September 2005. Single in the Sanctuary Zone at Castle Loch on 7th September 2010 (BH).*

BAR-TAILED GODWIT: *Scarce passage migrant. Last recorded 21st October 1983.*

WHIMBREL: *Scarce passage migrant. Last recorded 9th May 2006 (RM).*

CURLEW: *Regular passage migrant, sometimes in large numbers in spring. Breeds locally.*

SPOTTED REDSHANK: *Uncommon passage migrant. Last recorded 26th August 2001 (PSh).*

COMMON REDSHANK: *Irregular visitor to the reserve, usually in spring. Last records singles on 13th March 2006 and 13th July 2006 (RM).*

COMMON GREENSHANK: *Uncommon passage migrant. Last recorded 2nd-3rd September 2005.*

GREEN SANDPIPER: *Uncommon passage migrant. Last recorded 21st October 1994. Single at Innerfield Burn area 14th September (BH).*

WOOD SANDPIPER: *Rare passage migrant. Last record 3rd September 2005.*

COMMON SANDPIPER: *Uncommon passage migrant, local breeder. Adult with 3 juveniles in Sanctuary Zone on 3rd July (BH) suggests breeding within the reserve. This group was still present at Henderland Island on 25th July. All other records are singles: 27th April, 1st June, 3rd July, 12th August and 3rd September (all BH).*

ARCTIC SKUA: *Rare passage migrant. Last recorded 8th October 1995.*

GREAT SKUA: *Rare passage migrant. Last recorded 27th April 1999.*

LITTLE GULL: *Scarce passage migrant. Last recorded 20th March 2004.*

BLACK-HEADED GULL: *Common winter visitor; breeds locally. Maximum daytime count: 240 (AR). Winter roost irregular but building with counts of 2670 on 24th January (BH) and 10600 on 29th December (BH).*

MEDITERRANEAN GULL: *Rare vagrant. One previous record 15th March 2003 (Birdguides). At least one bird present in Castle Loch roost between 24th January and 12th March with two birds confirmed on the 3rd and 11th February and three on 14th February. Two birds noted in the roost during the second winter period on 28th and 29th December (all BH).*

COMMON GULL: *Mainly a winter visitor. Far fewer numbers in winter roost which is now dominated by Black-headed Gulls. Maximum count 440 on 29th December (BH).*

LESSER BLACK-BACKED GULL: *Most birds migrate south in winter. Usually at least one or two birds present throughout the year. Maximum count: 6 on 10th November (AR).*

HERRING GULL: *Seen regularly in small numbers in day time. Breeds locally. Present in roost. Maximum count 220 on 29th December (BH).*

GLAUCOUS GULL: *Rare winter visitor. Last previous records 25th February 1974 and 11th January 1984 and first winter bird at Castle Loch 17 November 2008 (CB).*

ICELAND GULL: *Rare winter visitor. One record 25th February 1974.*

GREAT BLACK-BACKED GULL: *Scarce local resident, seen occasionally. Last previous record 4 at Castle Loch on 15th February 2006. Forty in gull roost on 29th December (BH).*

KITTIWAKE: *Rare visitor. Last recorded 10th-15th January 1984.*

COMMON TERN: *Occasional on passage. Last recorded 19th August 2001, 26th August 2003 and 8-10 October 2006.*

ARCTIC TERN: *Occasional on passage. Last previous records singles on 26th September 2003 and 12th August 2011 (BH). Two at the Lochside Cottage area of Castle Loch on 3rd May 2012 (BH).*

BLACK TERN: *Fairly frequent on spring and autumn passage, most often seen second week of May to first week of June, and late August to early September. Last records 7th September 1998, a single at north end of Castle Loch from 8th –10th October 2006 (SG, RM) one at Castle Loch 16th May 2009 (BH) and other observers. A single bird was seen near the Lockerbie road on 8th September 2010 (BH).*

SANDWICH TERN: *Rare visitor. One record only 6th September 1973.*

COMMON GUILLEMOT: *Rare vagrant. Last recorded 26th December 1987 (2 birds).*

LITTLE AUK: *Rare vagrant. Last recorded mid to late 1980s.*

ROCK DOVE/FERAL PIGEON: *Common local resident in and around farms and towns. Occasional visitor to reserve.*

STOCK DOVE: *Resident breeder.*

WOOD PIGEON: *Regular breeder in the woods at both lochs.*

COLLARED DOVE: *Common local resident in and around farms and towns.*

COMMON CUCKOO: *Scarce summer visitor. Last recorded 10th May 2002.*

BARN OWL: *Scarce visitor, former breeder. Last previous record February to July 2009 in Castle Loch Woodland. Bird seen daytime flying at 18:16 on 29th July (BH).*

TAWNY OWL: *Resident regular breeder.*

LONG-EARED OWL: *Irregular visitor. Last recorded at Hightae Loch 28th October 1978 (PSh).*

SHORT-EARED OWL: *Rare visitor. Last recorded 28th November 1985.*

COMMON SWIFT: *Common summer visitor, breeds in Lochmaben. Maximum count 110 hawking in the Sanctuary Zone area on 28th June (BH).*

COMMON KINGFISHER: *Regular visitor, breeds locally. Maximum records this year two birds seen by several observers on a number of occasions and 3 birds (adult and two juveniles) seen on 28th July (BH).*

EUROPEAN GREEN WOODPECKER: *Scarce resident locally. Last recorded 31st May 1984.*

GREAT SPOTTED WOODPECKER: *Resident regular breeder.*

EURASIAN SKYLARK: *Irregular visitor. Last previous record 3 on 13th June 2011 (AR). No records in 2013.*

SAND MARTIN: *Regular visitor in spring and summer: breeds in banks of River Annan and at Applegarthtown Wildlife Sanctuary. First record of 8 on 9th April (BH). Maximum count: 260 on 15th April (BH).*

BARN SWALLOW: *Summer visitor, breeds locally.*

HOUSE MARTIN: *Summer visitor, breeds locally.*

TREE PIPIT: *Scarce summer visitor.*

MEADOW PIPIT: *Irregular visitor. No recent breeding records for the reserve. Last recorded 2003.*

YELLOW WAGTAIL: *Rare summer visitor. Last recorded 25th September 1981.*

GREY WAGTAIL: *Common local resident but irregular visitor to the reserve.*

PIED WAGTAIL: *Irregular visitor and breeder. Bred in both 2011 and 2012 near the Bowling Club (AR). Has bred again this year. Two adults with four young seen at Bowling Club Car Park on 24th June (AR).*

WHITE WAGTAIL: *Last recorded 28th April 1995.*

BOHEMIAN WAXWING: *Irregular, rare winter visitor. Last previous record 15 by Lochmaben Kirk on 17th November 2008.*

WREN: *Present throughout the year and breeds at both sites. Breeding confirmed from four sites at Castle Loch and one at Hightae.*

DUNNOCK: *Present throughout the year and breeds at both sites.*

ROBIN: *Present throughout the year and breeds at both sites. Young seen at both sites.*

COMMON REDSTART: *Scarce summer visitor and occasional breeder on the reserve. A pair present in Castle Woods on 9th May (BH). Unable to find proof of breeding.*

WHINCHAT: *Scarce summer visitor. Last recorded 10th May 1982.*

COMMON STONECHAT: *Scarce local resident. No record for the reserve.*

NORTHERN WHEATEAR: *Occasional passage migrant. Last recorded 2nd June 1991.*

BLACKBIRD: *Resident throughout the year and breeds at both sites.*

FIELDFARE: *Regular autumn and winter visitor.*

SONG THRUSH: *Present throughout the year and breeds at both sites.*

REDWING: *Regular autumn and winter visitor. Maximum count 6 opposite Henderland Island on 14th October (BH).*

MISTLE THRUSH: *Recorded in most years, breeds locally. No 2001 or 2002 records. A few records in 2003, 2004 and 2005. No reports for 2006, 2007 or 2008. Maximum count of 3 in 2010. Single singing in Castle Wood 2011. Single seen in Castle Wood in 2012. Three seen in boardwalk area on 21st September (BH).*

GRASSHOPPER WARBLER: *Summer visitor and irregular breeder. Last recorded on two spring dates in 1997.*

SEDGE WARBLER: *Summer visitor and regular breeder at both lochs. Breeding confirmed for three sites at Castle Loch and one site at Hightae Loch.*

REED WARBLER: *Summer visitor and recent breeder. Breeding confirmed for at least two sites.*

COMMON WHITETHROAT: *Scarce summer visitor. Last recorded 12th August 1996. Single near Valison Burn woodland on 19th May (BH).*

GARDEN WARBLER: *Summer visitor and breeder. Probable breeding at one site this year.*

BLACKCAP: *Summer visitor and breeder. Breeding confirmed at one site.*

WOOD WARBLER: *Scarce summer visitor. Occasional in spring. Last recorded 25th July and 5th August 2003.*

CHIFFCHAFF: *Regular spring and autumn migrant, occasional breeder. Confirmed breeding at two sites at Castle Loch this year.*

WILLOW WARBLER: *Summer visitor and regular breeder. Breeding confirmed for at least two sites at Castle Loch and one site at Hightae Loch.*

YELLOW-BROWED WARBLER: *Scarce autumn visitor to Western Europe. No previous records from the reserve. A single bird, perhaps the same individual, was seen in the Castle Wood area on 5th and 15th October and around the Valison Burn on 13th October (both BH).*

GOLDCREST: *Present throughout the year and probable breeder at both sites.*

SPOTTED FLYCATCHER: *Irregular summer visitor and occasional breeder. Last previous records: single at Castle Loch 25th August 2006 (RM) three at Castle Loch on 4th June 2009 (MG) and single at Hightae Loch on 13th May 2009 (JM).*

PIED FLYCATCHER: *Scarce summer visitor. Last recorded 9th August 1993.*

LONG-TAILED TIT: *Resident and breeds at Castle Loch. Maximum count 23 on 4th January at Dalton Road area (BH).*

WILLOW TIT: *Resident and regular breeder. Seen by a number of observers throughout the year. Since 2010 a regular breeding survey has been carried out at Castle Loch and other suitable sites around Lochmaben and Lockerbie. All previously used sites were surveyed during the early part of the breeding season. Once established territories had been located they were regularly monitored to determine levels of breeding success. Six areas initially showed territorial males and all were subsequently used for breeding. One nest was abandoned, possibly due to the continuous presence of fishermen in the immediate vicinity over a prolonged period and attempts to hack the dead wood for a fire. Two young were fledged from each of four nests with a single confirmed from the remaining pair. This is an excellent result and great care should be taken to ensure that the dead standing wood favoured by this species is not destroyed either by accident or design.*

COAL TIT: *Present throughout the year and breeds at both sites.*

BLUE TIT: *Present throughout the year and breeds at both sites.*

GREAT TIT: *Present throughout the year and breeds at both sites.*

EURASIAN NUTHATCH: *Increasingly numerous resident in Dumfries and Galloway, having spread westwards from Cumbria and the Scottish Borders during the 1990s. First reserve record near the castle on 21st April 2003 (PSed). Single birds seen feeding on trees near the hide and in Castle Wood on a number of occasions (AR).*

COMMON TREECREEPER: *Present throughout the year and breeds at both sites.*

JAY: *Resident and may breed on the reserve.*

MAGPIE: *Rare vagrant. Last recorded 24th March 1978.*

JACKDAW: *Resident breeder, supplemented by larger numbers coming to winter roost.*

ROOK: *Sporadic resident breeder supplemented by larger numbers coming to winter roost.*

CARRION CROW: *Resident breeder supplemented by larger numbers coming to winter roost. Adult with 3 juveniles seen in Castle Wood on 13th June (BH).*

HOODED CROW: *Last recorded 1981.*

COMMON RAVEN: *Occasional visitor. Last previous record two birds overflying 2nd October 2008 and one on 25th December 2011. Two birds overflying on 4th January (BH).*

COMMON STARLING: *Winter visitor and local breeder. The roost in the reeds around Vendace Bay is smaller this year. Maximum count: 4800 on 18th November (BH).*

ROSE-COLOURED STARLING: *Rare Eurasian vagrant. One record late October 2003.*

HOUSE SPARROW: *Common resident in Lochmaben and at surrounding farms. Irregularly recorded on reserve. Maximum count 21 near the sailing club on 19th November (AR).*

EURASIAN TREE SPARROW: *Scarce and declining resident on local farmland. Last recorded 1984.*

COMMON CHAFFINCH: *Present throughout the year and bred at both sites.*

BRAMBLING: *Irregular winter visitor. Single bird in chaffinch flock in Dalton Road Wood on 16th December (AR).*

EUROPEAN GREENFINCH: *Present throughout the year, probably breeds. Numbers slightly up again this year suggesting that the effects of Trichonomiasis might be diminishing.*

EUROPEAN GOLDFINCH: *Occasional visitor. Probably breeds in some years. Maximum count: 12 on 26th August (AR).*

EURASIAN SISKIN: *Winter visitor and passage migrant. Maximum count: 16 on 10th November (AR).*

EUROPEAN LINNET: *Scarce resident locally. Last recorded 30th August and 29th December 2003.*

LESSER REDPOLL: *Resident in wider vicinity, irregular on the reserve. Maximum count: 7 on 13th December (BH).*

COMMON CROSSBILL: *Irregular visitor. Probable breeder in conifer forests in vicinity. Last recorded 27th May 2003.*

EURASIAN BULLFINCH: *Irregular. May breed occasionally. Group of 5 seen near Vendace Burn feeders on 26th August (AR).*

YELLOWHAMMER: *Used to be a regular resident breeder. Last recorded 2003.*

COMMON REED BUNTING: *Regular resident breeder. Breeding confirmed for at least two sites.*

CORN BUNTING: *Rare visitor (and now extremely rare resident in D&G). Recorded 26th February and 6th May 1978 at Castle Loch and at Hightae Loch on 2nd February 1980 (all records PSh).*



Yellow-browed Warbler, Castle Loch, Brian Henderson

